

# THE PRINCETON PACKET

Vol. 225, No. 20

Published Tuesday and Friday

Tuesday, March 9, 2010

609-924-3244

centraljersey.com

75 Cents

## Nassau Inn begins expansion project

By Lauren Otis  
Staff Writer

Work has begun at the Nassau Inn on an outdoor dining area on Palmer Square, the initial phase of a large-scale planned overhaul of the hotel in downtown Princeton.

"Right now, we are moving forward with the Yankee Doodle Tap Room plaza for outdoor dining," said Nassau Inn General Manager Lori Rabon.

The Nassau Inn anticipates completion of the new outdoor dining area by mid-May, Ms. Rabon said.

"We are very excited," she said of the prospect of the dining area's completion before the summer outdoor dining season.

"The next phase will be the Colonial Wing, but we will not be starting that 'til 2011," said Ms. Rabon of plans to renovate and remodel 84 existing guest rooms into 52 new larger guest rooms in one wing of the hotel.

The Colonial Wing renovation plan still is awaiting the completion of its review period with the state Department of Community Affairs,

'Right now, we are moving forward with the Yankee Doodle Tap Room plaza.'

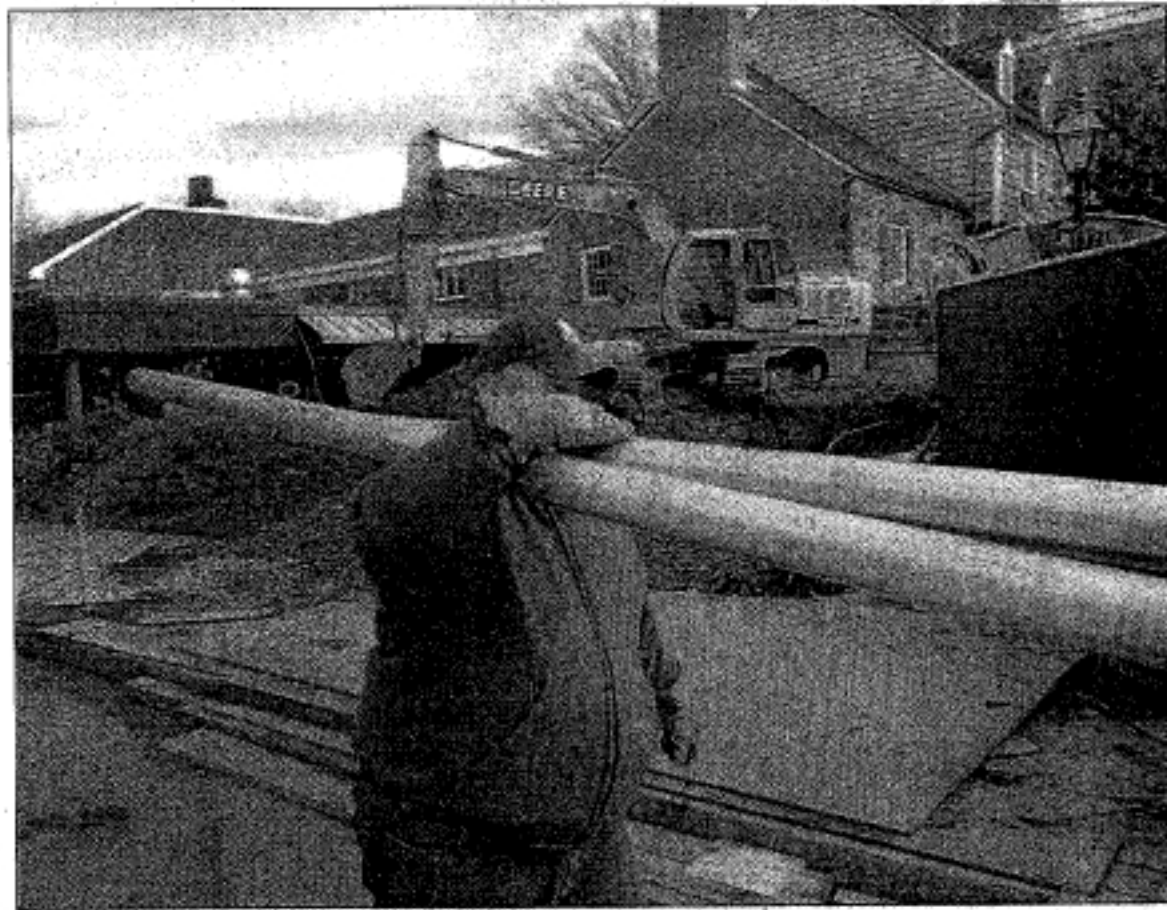
Lori Rabon  
general manager

Ms. Rabon said.

The Nassau Inn has received all municipal approvals for its expansion and renovation. The full plan includes demolition of the one-story building housing Lindt Chocolate on Palmer Square West to be replaced by a three-story, 5,700-square-foot building and a six-story, 39,000-square-foot expansion of the Inn along Hulfish Street.

When the upgrade is completed, the Nassau Inn will have 211 large new guest rooms, up from 203, as well as expanded ballroom and conference facilities.

lotis@centraljersey.com



Staff photo by Mark Czajkowski

A worker carries metal tubing near the construction site at the Nassau Inn at Palmer Square West on Thursday morning.